

## Description

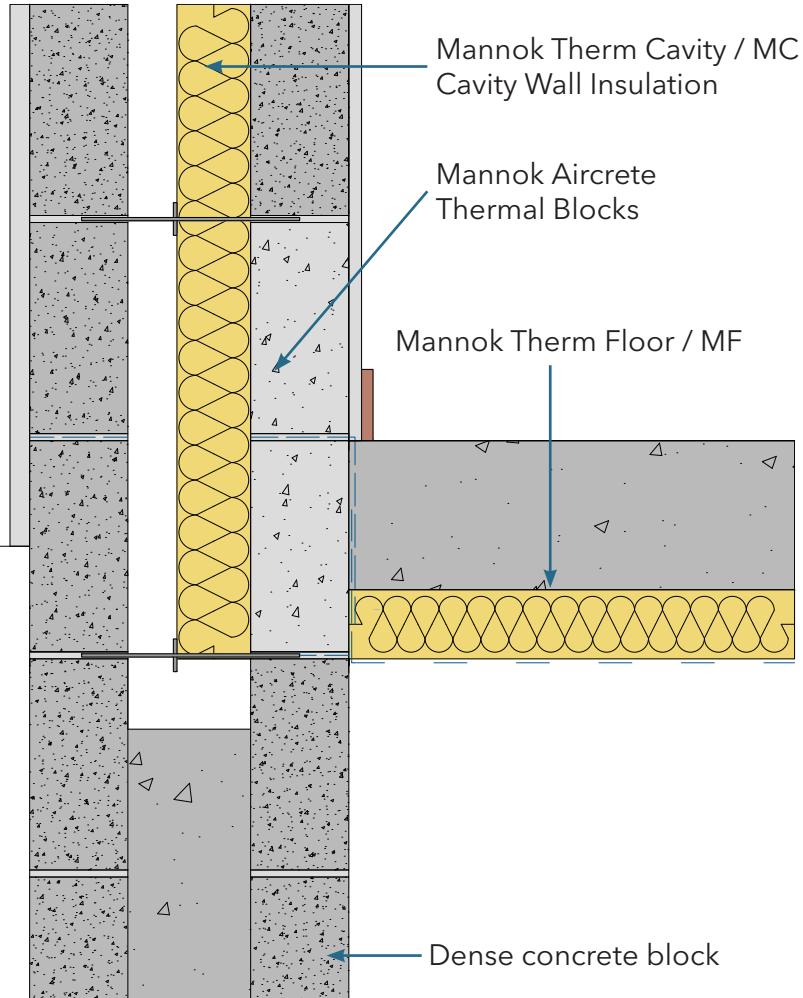
Partial Fill Cavity Wall / Solid Ground Floor Slab Insulation Under Structural Slab

### Identifier

1.02

### NSAI modeller no.

TM/02



	A		B		C		D	
	Wall U-value 0.21W/m <sup>2</sup> K (partial fill insulation only) Roof = 0.16, Floor = 0.21		Wall U-value 0.15W/m <sup>2</sup> K (partial fill insulation with internal insulation) Roof = 0.14, Floor = 0.15		Wall U-value 0.15W/m <sup>2</sup> K (partial fill insulation only) Roof = 0.14, Floor = 0.15		Wall U-value 0.12W/m <sup>2</sup> K (partial fill insulation with internal insulation) Roof = 0.12, Floor = 0.12h	
Inner leaf type	Ψ-value (W/mK)	Temperature factor (fRsi)	Ψ-value (W/mK)	Temperature factor (fRsi)	Ψ-value (W/mK)	Temperature factor (fRsi)	Ψ-value (W/mK)	Temperature factor (fRsi)
Mannok Aircrete Super	0.050	0.900	0.053	0.930	0.025	0.910	0.057	0.930
Mannok Aircrete Standard	0.061	0.880	0.058	0.920	0.036	0.900	0.062	0.920
Mannok Aircrete Seven	0.064	0.880	0.060	0.920	0.040	0.900	0.063	0.920
Dense Block	0.186	0.770	0.103	0.920	0.172	0.790	0.092	0.910

## Notes

Perimeter insulation around screed to have thermal resistance of 2.25m<sup>2</sup>K/W or greater.

