

Description

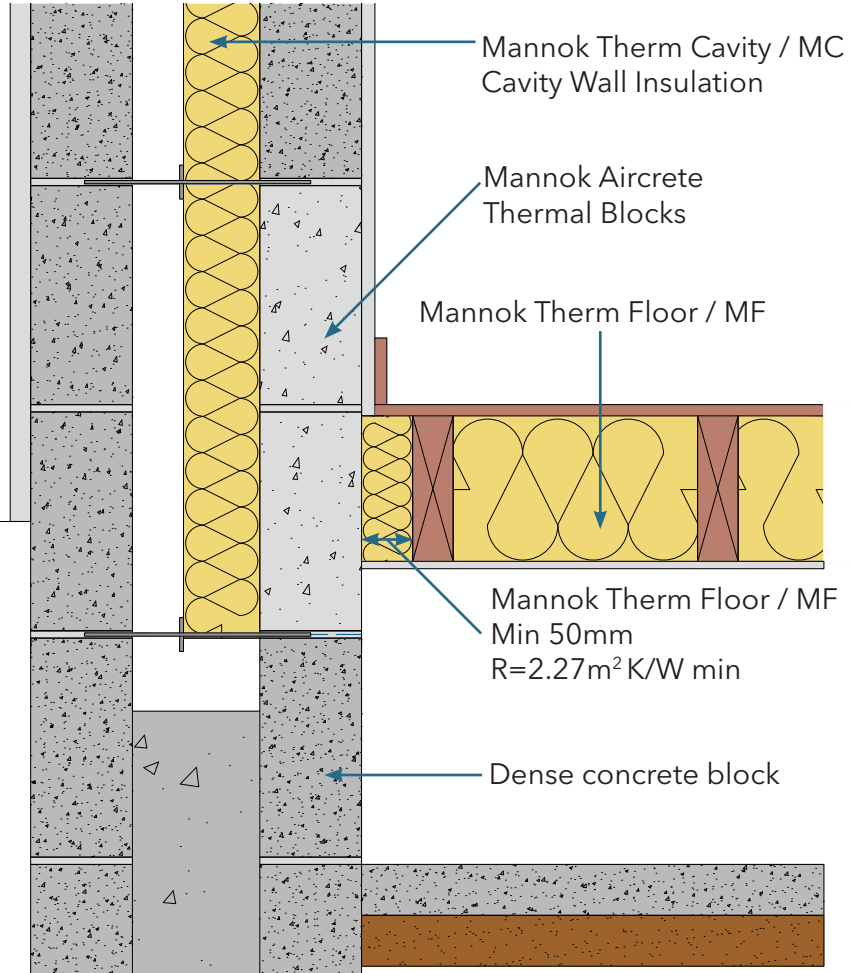
Partial fill cavity wall with internal insulation /
Suspended timber floor insulated between
joists

Identifier

1.03

NSAI modeller no.

TM/02



	A		B		C		D	
	Wall U-value 0.21W/m ² K (partial fill insulation only) Roof = 0.16, Floor = 0.21		Wall U-value 0.15W/m ² K (partial fill insulation with internal insulation) Roof = 0.14, Floor = 0.15		Wall U-value 0.15W/m ² K (partial fill insulation only) Roof = 0.14, Floor = 0.15		Wall U-value 0.12W/m ² K (partial fill insulation with internal insulation) Roof = 0.12, Floor = 0.12	
Inner leaf type	Ψ-value (W/mK)	Temperature factor (fRsi)	Ψ-value (W/mK)	Temperature factor (fRsi)	Ψ-value (W/mK)	Temperature factor (fRsi)	Ψ-value (W/mK)	Temperature factor (fRsi)
Mannok Aircrete Super	0.106	0.85	0.044	0.83	0.050	0.86	0.008	0.89
Mannok Aircrete Standard	0.026	0.84	0.051	0.82	0.065	0.85	0.012	0.89
Mannok Aircrete Seven	0.031	0.84	0.053	0.82	0.071	0.84	0.013	0.89
Dense Block	0.201	0.78	0.106	0.79	0.238	0.79	0.035	0.87

Notes

Cavity insulation to continue at least 200mm below internal deck level. Insulation between first joist and inner leaf blockwork to have thermal resistance of min. 1.6m²K/W.

