

Description

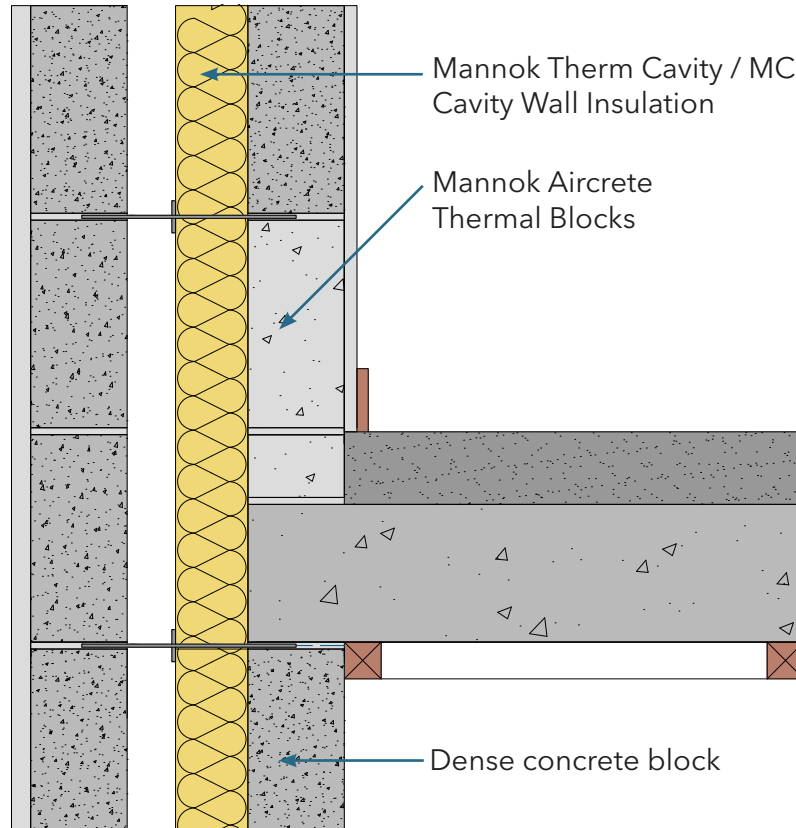
Precast concrete intermediate floor between dwellings

Identifier

1.04

NSAI modeller no.

TM/02



	A		B		C		D	
	Wall U-value 0.21W/m ² K (partial fill insulation only) Roof = 0.16, Floor = 0.21		Wall U-value 0.15W/m ² K (partial fill insulation with internal insulation) Roof = 0.14, Floor = 0.15		Wall U-value 0.15W/m ² K (partial fill insulation only) Roof = 0.14, Floor = 0.15		Wall U-value 0.12W/m ² K (partial fill insulation with internal insulation) Roof = 0.12, Floor = 0.12	
Inner leaf type	Ψ-value (W/mK)	Temperature factor (fRsi)	Ψ-value (W/mK)	Temperature factor (fRsi)	Ψ-value (W/mK)	Temperature factor (fRsi)	Ψ-value (W/mK)	Temperature factor (fRsi)
Mannok Aircrete Super	0.050	0.940	0.073	0.930	0.037	0.960	0.095	0.920
Mannok Aircrete Standard	0.052	0.940	0.075	0.930	0.038	0.960	0.097	0.920
Mannok Aircrete Seven	0.052	0.940	0.075	0.930	0.038	0.960	0.098	0.920
Dense Block	0.055	0.950	0.084	0.920	0.040	0.960	0.111	0.900

Notes

Diagram is illustrative only. Where the floor separates two dwellings, attention should be paid to other aspects of building regulations outside of part L, in particular parts B (Fire) and E (sound). The psi values in the table above are for the whole junction. Only half of these values should be assigned to each dwelling.

