

Description

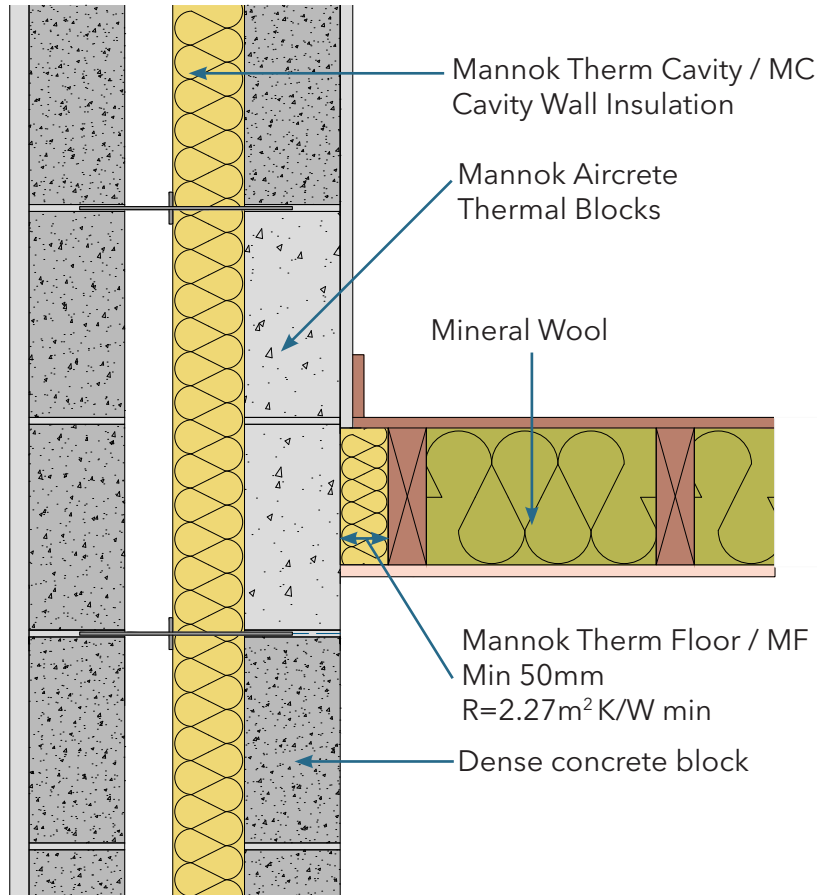
Timber separating floor
between dwellings

Identifier

1.05

NSAI modeller no.

TM/02



	A		B		C		D	
	Wall U-value 0.21W/m²K (partial fill insulation only) Roof = 0.16, Floor = 0.21		Wall U-value 0.15W/m²K (partial fill insulation with internal insulation) Roof = 0.14, Floor = 0.15		Wall U-value 0.15W/m²K (partial fill insulation only) Roof = 0.14, Floor = 0.15		Wall U-value 0.12W/m²K (partial fill insulation with internal insulation) Roof = 0.12, Floor = 0.12	

Inner leaf type	A		B		C		D	
	Ψ-value (W/mK)	Temperature factor (fRsi)	Ψ-value (W/mK)	Temperature factor (fRsi)	Ψ-value (W/mK)	Temperature factor (fRsi)	Ψ-value (W/mK)	Temperature factor (fRsi)
Mannok Aircrete Super	0.055	0.93	0.064	0.92	0.043	0.95	0.076	0.92
Mannok Aircrete Standard	0.057	0.93	0.066	0.92	0.044	0.95	0.079	0.92
Mannok Aircrete Seven	0.058	0.93	0.066	0.92	0.044	0.95	0.079	0.92
Dense Block	0.063	0.94	0.074	0.92	0.047	0.95	0.090	0.92

Notes

Notes: Diagram is illustrative only. Where the floor separates two dwellings, attention should be paid to other aspects of building regulations outside of part L, in particular parts B (Fire) and E (sound). The psi values in the table above are for the whole junction. Only half of these values should be assigned to each dwelling.

