

## Description

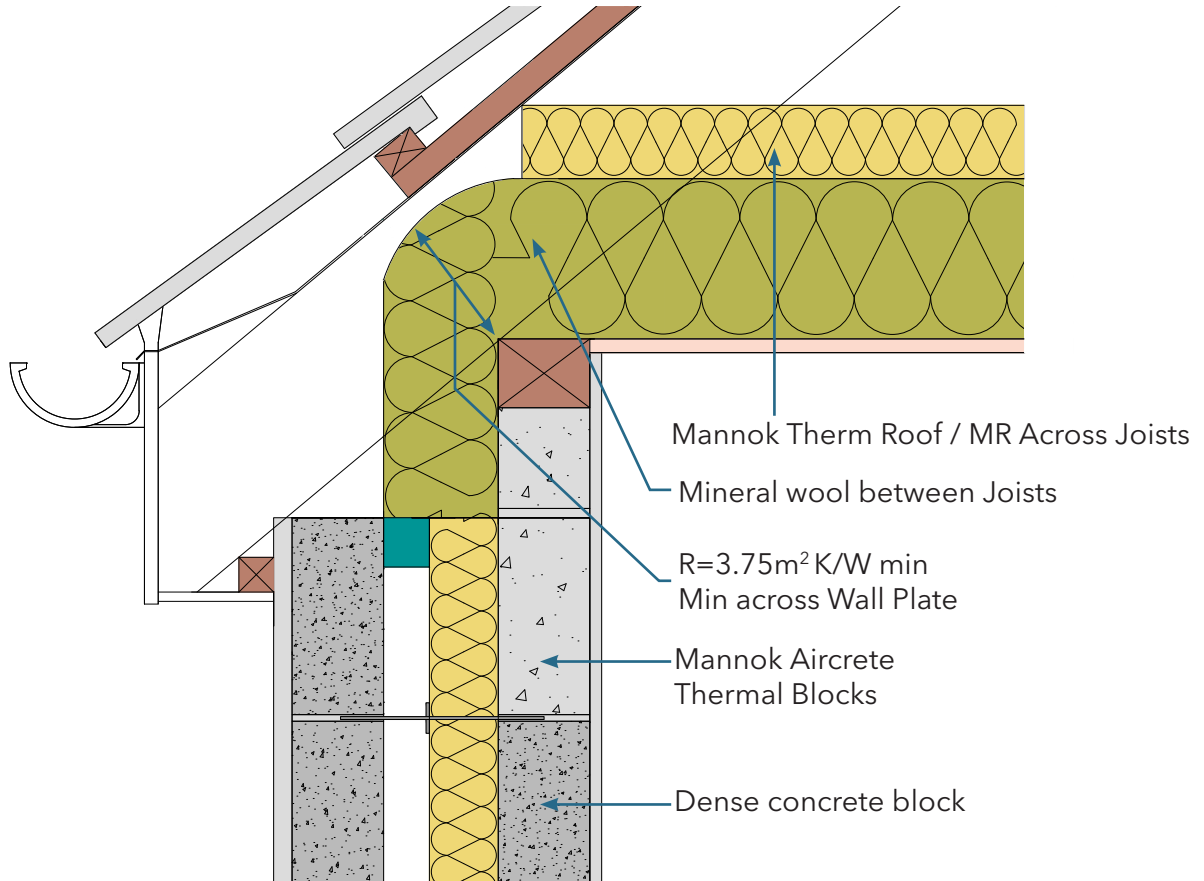
Ventilated/unventilated rafter void - dormer, partial fill cavity wall with internal insulation

## Identifier

1.11.1 & 1.12.1

## NSAI modeller no.

TM/02



	A		B		C		D	
	Wall U-value 0.21W/m <sup>2</sup> K (partial fill insulation only) Roof = 0.16, Floor = 0.21		Wall U-value 0.15W/m <sup>2</sup> K (partial fill insulation with internal insulation) Roof = 0.14, Floor = 0.15		Wall U-value 0.15W/m <sup>2</sup> K (partial fill insulation only) Roof = 0.14, Floor = 0.15		Wall U-value 0.12W/m <sup>2</sup> K (partial fill insulation with internal insulation) Roof = 0.12, Floor = 0.12	
Inner leaf type	Ψ-value (W/mK)	Temperature factor (fRsi)	Ψ-value (W/mK)	Temperature factor (fRsi)	Ψ-value (W/mK)	Temperature factor (fRsi)	Ψ-value (W/mK)	Temperature factor (fRsi)
Mannok Aircrete Super	0.013	0.9	0.020	0.89	0.025	0.92	0.020	0.90
Mannok Aircrete Standard	0.017	0.91	0.022	0.89	0.027	0.92	0.022	0.90
Mannok Aircrete Seven	0.018	0.91	0.022	0.89	0.028	0.91	0.022	0.90
Dense Block	0.028	0.92	0.027	0.89	0.027	0.92	0.025	0.89

## Notes

Notes: Thermal resistance of insulation carried across wall plate to be min. 3.75m<sup>2</sup>K/W. Mineral wool or similar products used between joists and across wall plate to have maximum thermal conductivity of 0.04W/mK.