

Description

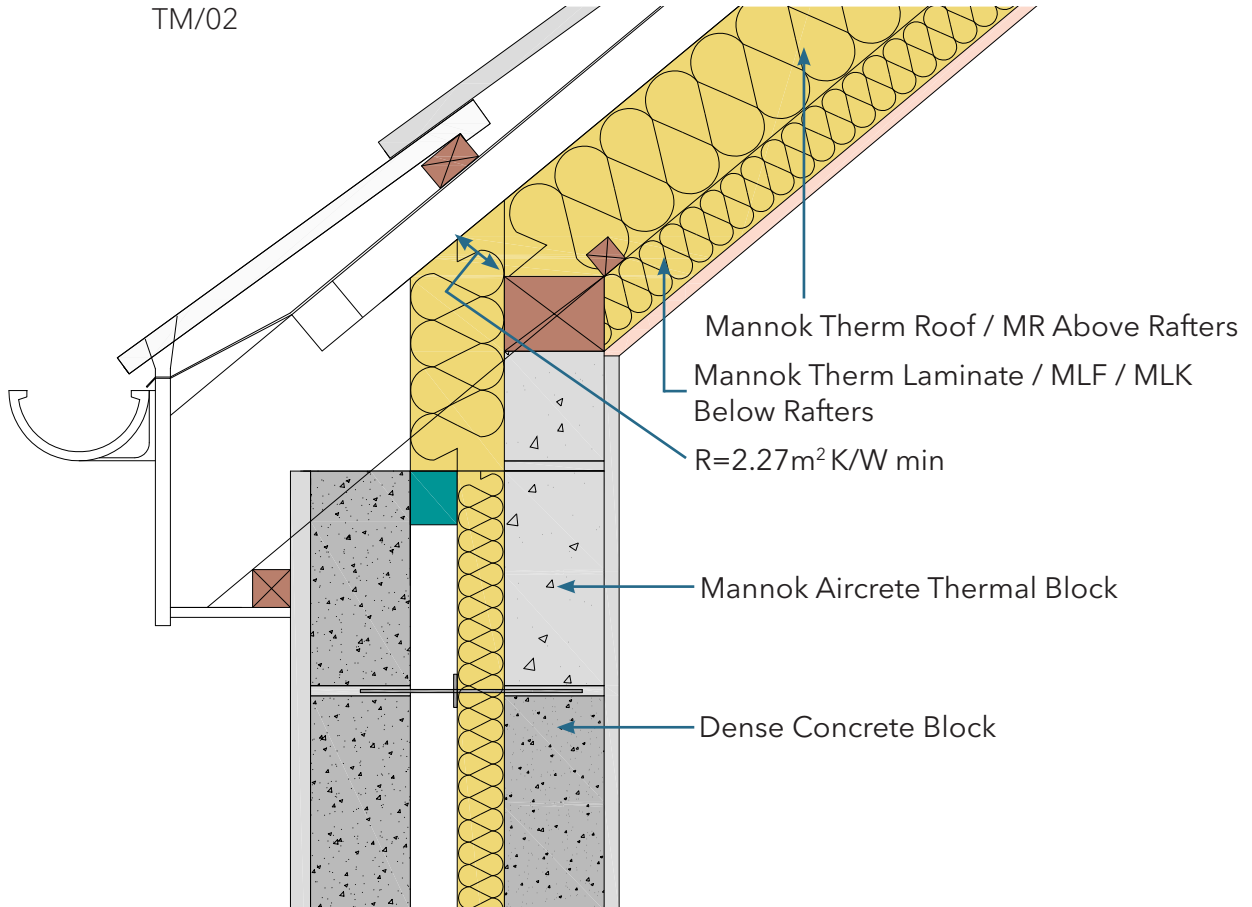
Eaves - insulation between and under rafters / partial fill external cavity wall

Identifier

1.13.1

NSAI modeller no.

TM/02



	A		B		C		D	
	Wall U-value $0.21\text{W/m}^2\text{K}$ (partial fill insulation only) Roof = 0.16, Floor = 0.21		Wall U-value $0.15\text{W/m}^2\text{K}$ (partial fill insulation with internal insulation) Roof = 0.14, Floor = 0.15		Wall U-value $0.15\text{W/m}^2\text{K}$ (partial fill insulation only) Roof = 0.14, Floor = 0.15		Wall U-value $0.12\text{W/m}^2\text{K}$ (partial fill insulation with internal insulation) Roof = 0.12, Floor = 0.12	
Inner leaf type	Ψ -value (W/mK)	Temperature factor (fRsi)	Ψ -value (W/mK)	Temperature factor (fRsi)	Ψ -value (W/mK)	Temperature factor (fRsi)	Ψ -value (W/mK)	Temperature factor (fRsi)
Mannok Aircrete Super	0.013	0.91	0.013	0.91	0.022	0.91	0.016	0.92
Mannok Aircrete Standard	0.016	0.91	0.015	0.91	0.025	0.91	0.017	0.92
Mannok Aircrete Seven	0.018	0.91	0.015	0.91	0.026	0.91	0.017	0.92
Dense Block	0.029	0.92	0.022	0.91	0.035	0.92	0.021	0.92

Notes

Thermal resistance of insulation across wall plate to be min. $2.27\text{m}^2\text{K/W}$ (or 50mm Mannok Therm Roof / MR). Cavity barrier represented here by 50mm mineral wool (0.04W/mK). Compliance with all other aspects of the building regulations, particularly Part B (Fire) must be considered separately.

