

## Description

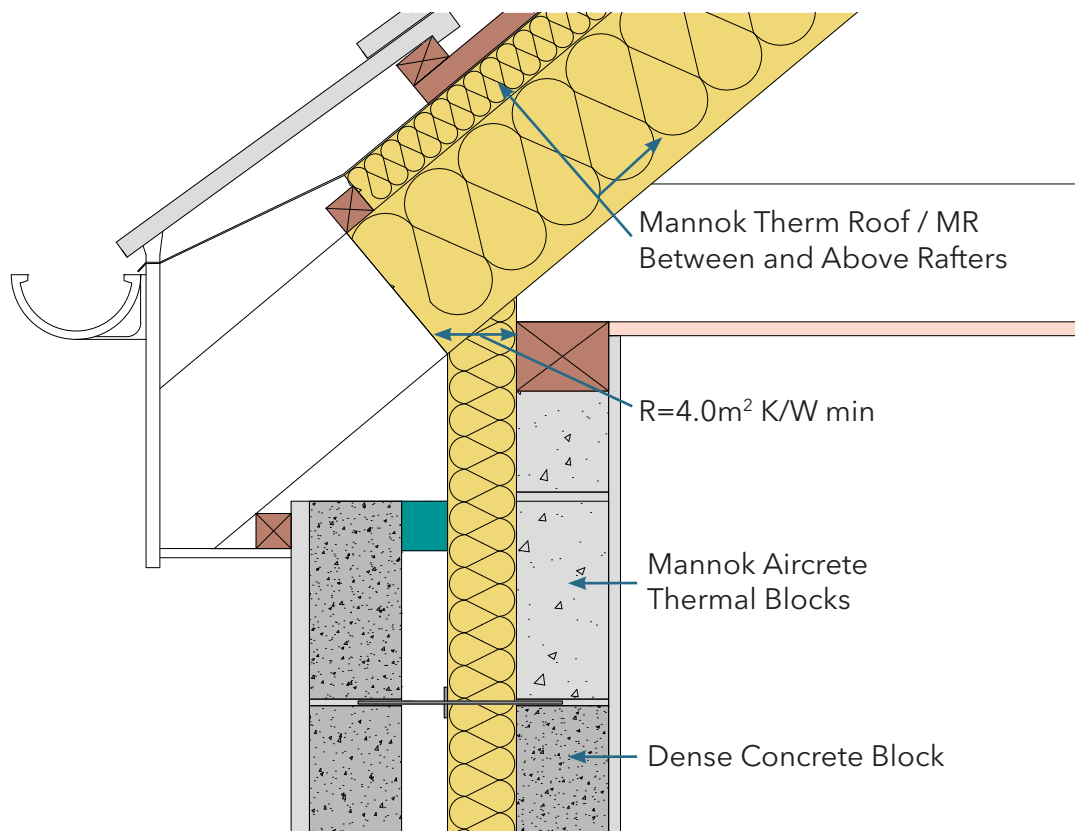
Eaves - Unventilated - Insulation between and over rafters - Dormer

## Identifier

1.14

## NSAI modeller no.

TM/02



	A		B		C		D	
	Wall U-value 0.21W/m <sup>2</sup> K (partial fill insulation only) Roof = 0.16, Floor = 0.21		Wall U-value 0.15W/m <sup>2</sup> K (partial fill insulation with internal insulation) Roof = 0.14, Floor = 0.15		Wall U-value 0.15W/m <sup>2</sup> K (partial fill insulation only) Roof = 0.14, Floor = 0.15		Wall U-value 0.12W/m <sup>2</sup> K (partial fill insulation with internal insulation) Roof = 0.12, Floor = 0.12	
Inner leaf type	Ψ-value (W/mK)	Temperature factor (fRsi)	Ψ-value (W/mK)	Temperature factor (fRsi)	Ψ-value (W/mK)	Temperature factor (fRsi)	Ψ-value (W/mK)	Temperature factor (fRsi)
Mannok Aircrete Super	-0.008	0.92	0.019	0.92	0.005	0.93	0.031	0.92
Mannok Aircrete Standard	-0.005	0.92	0.021	0.92	0.007	0.93	0.033	0.92
Mannok Aircrete Seven	-0.005	0.92	0.021	0.92	0.007	0.93	0.034	0.92

## Notes

Minimum R value across insulation thickness at eaves near wallplate 4.0 m<sup>2</sup>K/W. Two courses of Mannok Aircrete Thermal Blocks under wallplate.