

## Description

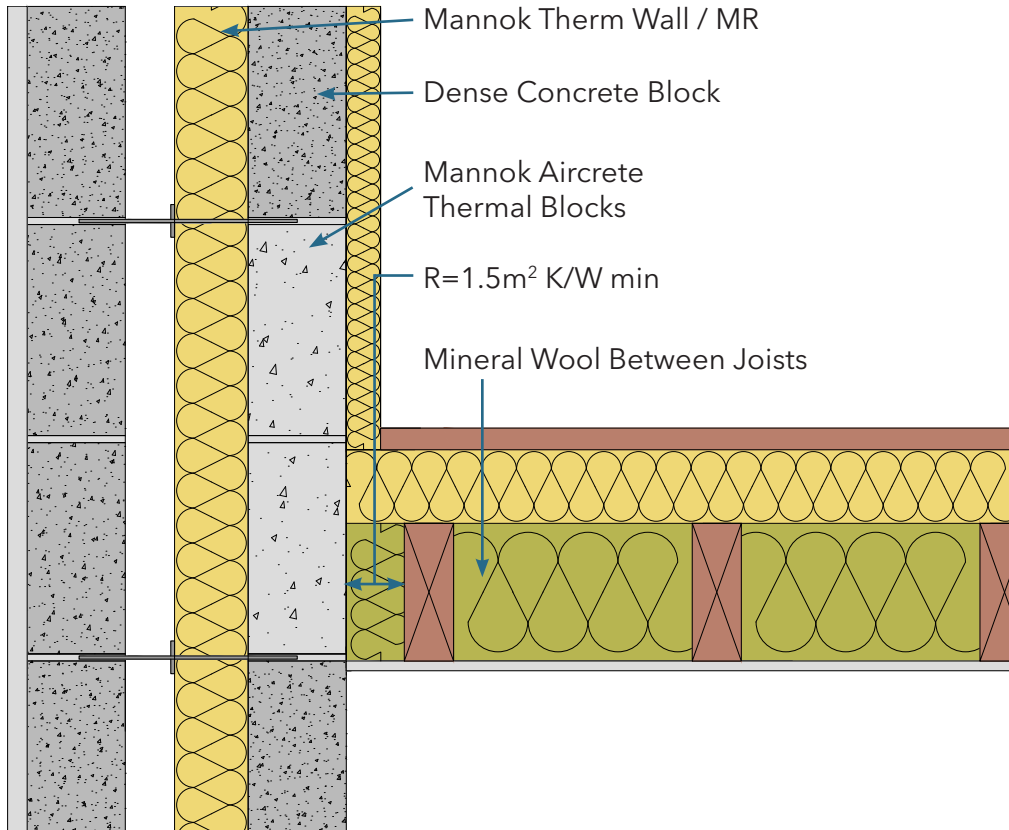
Ventilated Roof - Attic floor level

### Identifier

1.15

### NSAI modeller no.

TM/02



	A		B		C		D	
	Wall U-value 0.21W/m <sup>2</sup> K (partial fill insulation only) Roof = 0.16, Floor = 0.21		Wall U-value 0.15W/m <sup>2</sup> K (partial fill insulation with internal insulation) Roof = 0.14, Floor = 0.15		Wall U-value 0.15W/m <sup>2</sup> K (partial fill insulation only) Roof = 0.14, Floor = 0.15		Wall U-value 0.12W/m <sup>2</sup> K (partial fill insulation with internal insulation) Roof = 0.12, Floor = 0.12	
Inner leaf type	Ψ-value (W/mK)	Temperature factor (fRsi)	Ψ-value (W/mK)	Temperature factor (fRsi)	Ψ-value (W/mK)	Temperature factor (fRsi)	Ψ-value (W/mK)	Temperature factor (fRsi)
Mannok Aircrete Super	0.078	0.90	0.059	0.87	0.067	0.92	0.051	0.87
Mannok Aircrete Standard	0.088	0.89	0.064	0.87	0.077	0.91	0.054	0.86
Mannok Aircrete Seven	0.092	0.89	0.066	0.87	0.081	0.91	0.056	0.086

## Notes

Compressible insulation between last ceiling joist and gable wall to have minimum R value of 1.5 m<sup>2</sup>K/W. 450mm of insulation above top of ceiling insulation with R value of 2.27 m<sup>2</sup>K/W.

