

Description

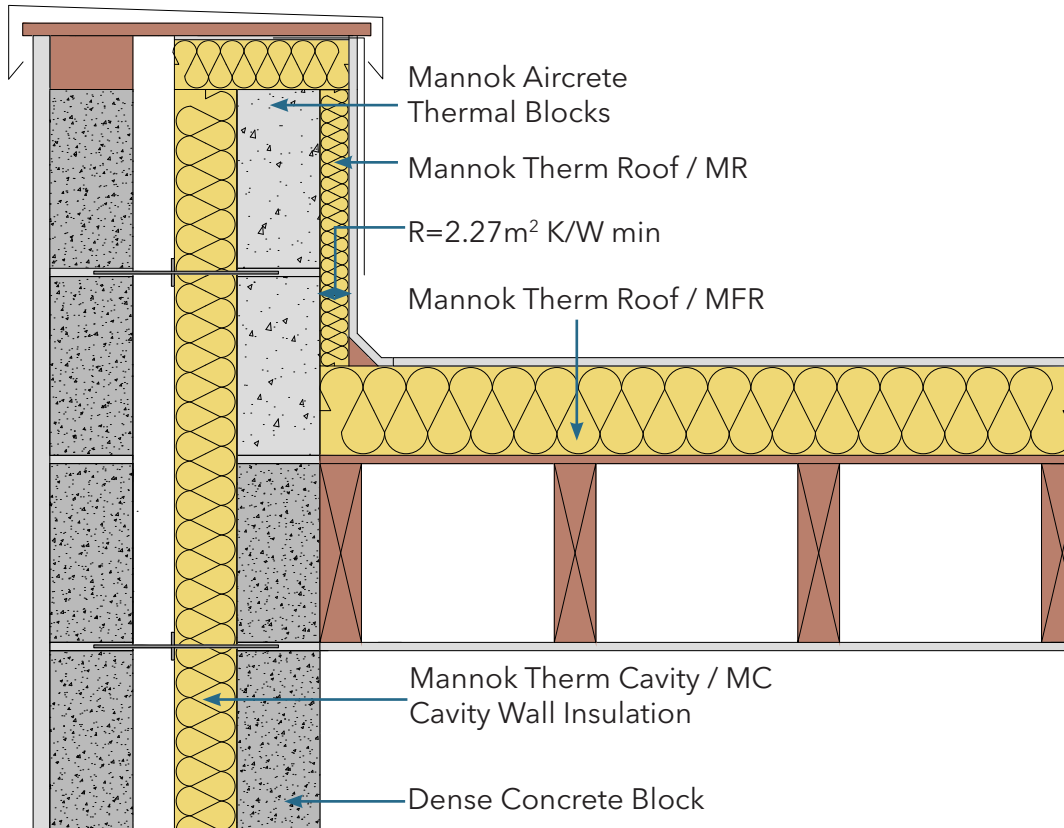
Flat Roof - Parapet

Identifier

1.20

NSAI modeller no.

TM/02



| | A | | B | | C | | D | |
|--------------------------|--|---------------------------|--|---------------------------|--|---------------------------|--|---------------------------|
| | Wall U-value 0.21W/m ² K (partial fill insulation only) Roof = 0.16, Floor = 0.21 | | Wall U-value 0.15W/m ² K (partial fill insulation with internal insulation) Roof = 0.14, Floor = 0.15 | | Wall U-value 0.15W/m ² K (partial fill insulation only) Roof = 0.14, Floor = 0.15 | | Wall U-value 0.12W/m ² K (partial fill insulation with internal insulation) Roof = 0.12, Floor = 0.12 | |
| Inner leaf type | Ψ-value (W/mK) | Temperature factor (fRsi) | Ψ-value (W/mK) | Temperature factor (fRsi) | Ψ-value (W/mK) | Temperature factor (fRsi) | Ψ-value (W/mK) | Temperature factor (fRsi) |
| Mannok Aircrete Super | 0.091 | 0.89 | 0.088 | 0.89 | 0.077 | 0.91 | 0.095 | 0.88 |
| Mannok Aircrete Standard | 0.100 | 0.89 | 0.094 | 0.89 | 0.086 | 0.91 | 0.101 | 0.88 |
| Mannok Aircrete Seven | 0.103 | 0.89 | 0.097 | 0.88 | 0.089 | 0.91 | 0.103 | 0.88 |

Notes

Insulation upstand to have minimum R-value of 2.27 m²K/W. 300mm minimum between top of insulation upstand and bottom of horizontal roof insulation.

