

Description

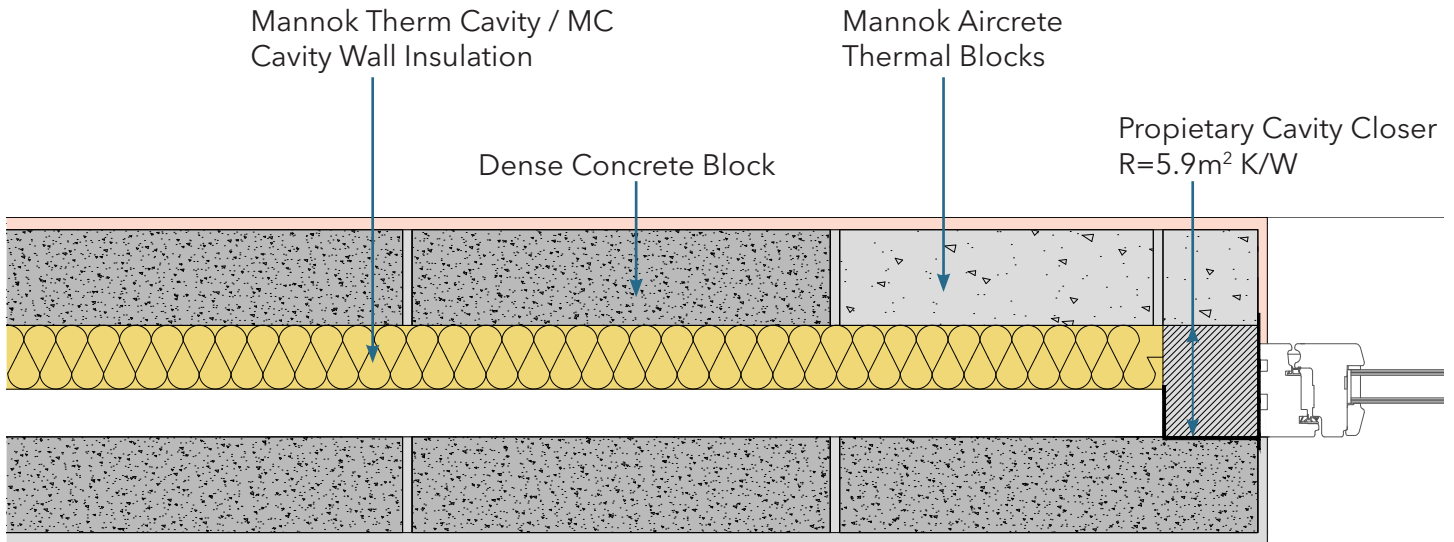
Ope - Jamb with proprietary cavity closer

Identifier

1.25

NSAI modeller no.

TM/02



	A		B		C		D	
	Wall U-value 0.21W/m ² K (partial fill insulation only) Roof = 0.16, Floor = 0.21		Wall U-value 0.15W/m ² K (partial fill insulation with internal insulation) Roof = 0.14, Floor = 0.15		Wall U-value 0.15W/m ² K (partial fill insulation only) Roof = 0.14, Floor = 0.15		Wall U-value 0.12W/m ² K (partial fill insulation with internal insulation) Roof = 0.12, Floor = 0.12	
Inner leaf type	Ψ-value (W/mK)	Temperature factor (fRsi)	Ψ-value (W/mK)	Temperature factor (fRsi)	Ψ-value (W/mK)	Temperature factor (fRsi)	Ψ-value (W/mK)	Temperature factor (fRsi)
Mannok Aircrete Super	-0.149	0.94	-0.009	0.96	-0.005	0.95	-0.001	0.75
Mannok Aircrete Standard	-0.012	0.94	-0.007	0.96	-0.004	0.95	-0.001	0.96
Mannok Aircrete Seven	-0.011	0.94	-0.007	0.96	-0.003	0.95	-0.001	0.96

Notes

Thermal resistance of insulation carried across wall plate to be min. 3.75m²K/W.
 Mineral wool or similar products used between joists and across wall plate to have maximum thermal conductivity of 0.04W/mK.

