

**Description**

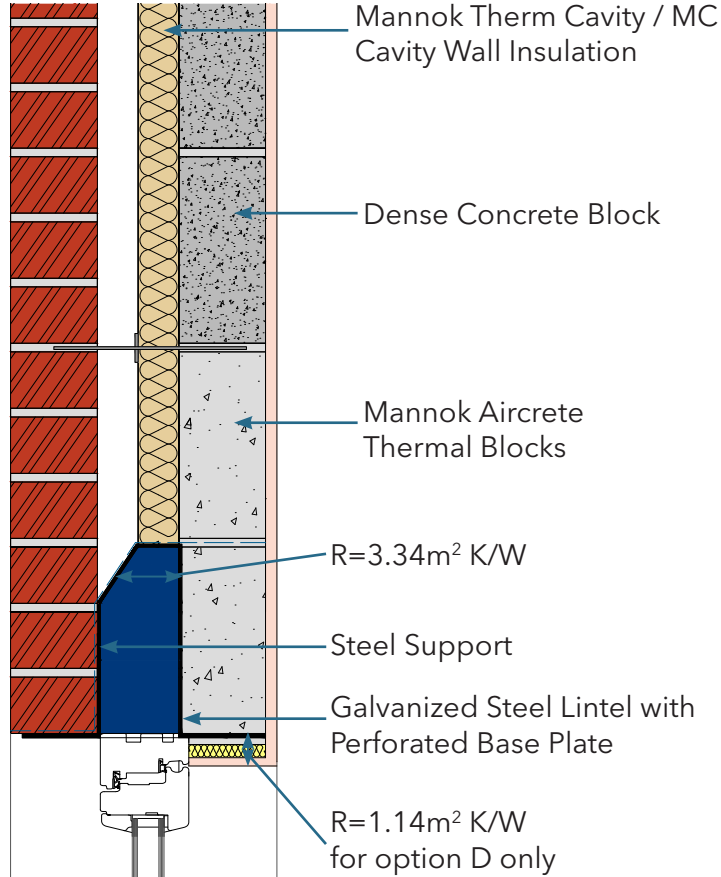
Galvanised Steel Top hat lintel detail bridging masonry cavity wall

**Identifier**

Diagram 1

**NSAI modeller no.**

TM/02



	A	B	C	D
	Wall U-value 0.21W/m <sup>2</sup> K (partial fill insulation only) Roof = 0.16, Floor = 0.21	Wall U-value 0.15W/m <sup>2</sup> K (partial fill insulation with internal insulation) Roof = 0.14, Floor = 0.15	Wall U-value 0.15W/m <sup>2</sup> K (partial fill insulation only) Roof = 0.14, Floor = 0.15	Wall U-value 0.12W/m <sup>2</sup> K (partial fill insulation with internal insulation) Roof = 0.12, Floor = 0.12

Inner leaf type	A		B		C		D	
	Ψ-value (W/mK)	Temperature factor (fRsi)	Ψ-value (W/mK)	Temperature factor (fRsi)	Ψ-value (W/mK)	Temperature factor (fRsi)	Ψ-value (W/mK)	Temperature factor (fRsi)
Mannok Aircrete Super		Fails	0.126	0.88		Fails	0.108	0.87
Mannok Aircrete Standard		Fails	0.133	0.88		Fails	0.112	0.87
Mannok Aircrete Seven		Fails	0.134	0.88		Fails	0.113	0.88

**Notes**

Notes: Thickness of lintel material not more than 3mm. No base plate. NOT RECOMMENDED WITHOUT INTERNAL INSULATION IN ADDITION TO PARTIAL FILL CAVITY INSULATION DUE TO LOW SURFACE TEMPERATURE ISSUE.

