

Description

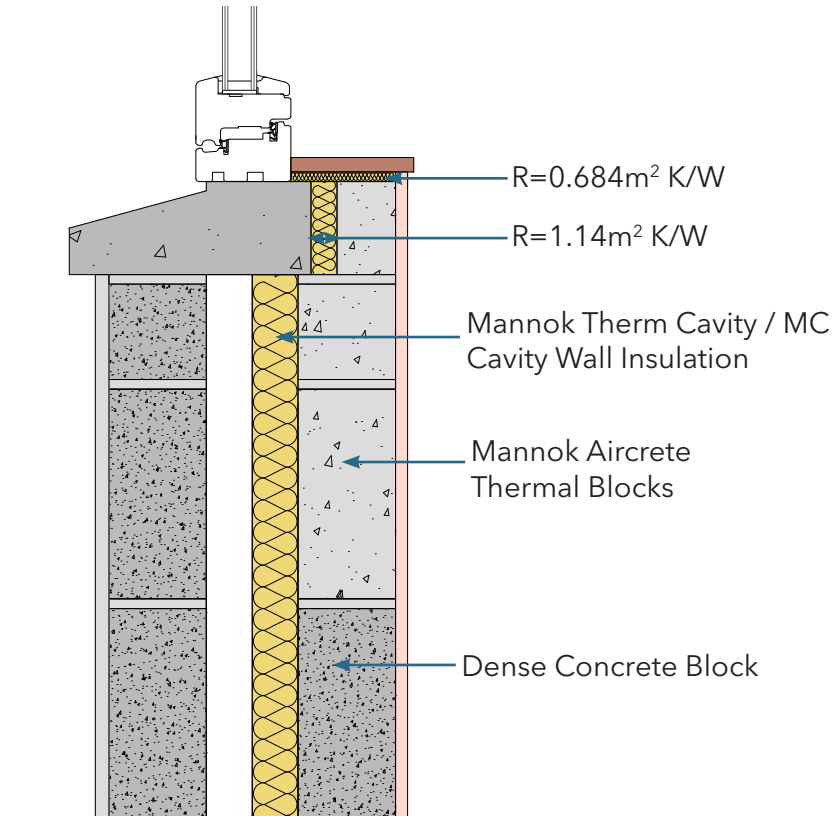
Concrete Back Sill Detail (insulation below wood sill section)

Identifier

Diagram 2

NSAI modeller no.

TM/02



	A		B		C		D	
	Wall U-value 0.21W/m ² K (partial fill insulation only) Roof = 0.16, Floor = 0.21		Wall U-value 0.15W/m ² K (partial fill insulation with internal insulation) Roof = 0.14, Floor = 0.15		Wall U-value 0.15W/m ² K (partial fill insulation only) Roof = 0.14, Floor = 0.15		Wall U-value 0.12W/m ² K (partial fill insulation with internal insulation) Roof = 0.12, Floor = 0.12	
Inner leaf type	Ψ-value (W/mK)	Temperature factor (fRsi)	Ψ-value (W/mK)	Temperature factor (fRsi)	Ψ-value (W/mK)	Temperature factor (fRsi)	Ψ-value (W/mK)	Temperature factor (fRsi)
Mannok Aircrete Super	0.146	0.82	0.103	0.83	0.181	0.82	0.981	0.82
Mannok Aircrete Standard	0.163	0.81	0.111	0.82	0.195	0.83	0.104	0.82
Mannok Aircrete Seven	0.169	0.81	0.114	0.82	0.200	0.83	0.106	0.82

Notes

Install insulation under wood cill with minimum R-value of 0.682 m²K/W along with insulation to rear of cill to have a minimum R-value of 1.14 m²K/W.

