

Description

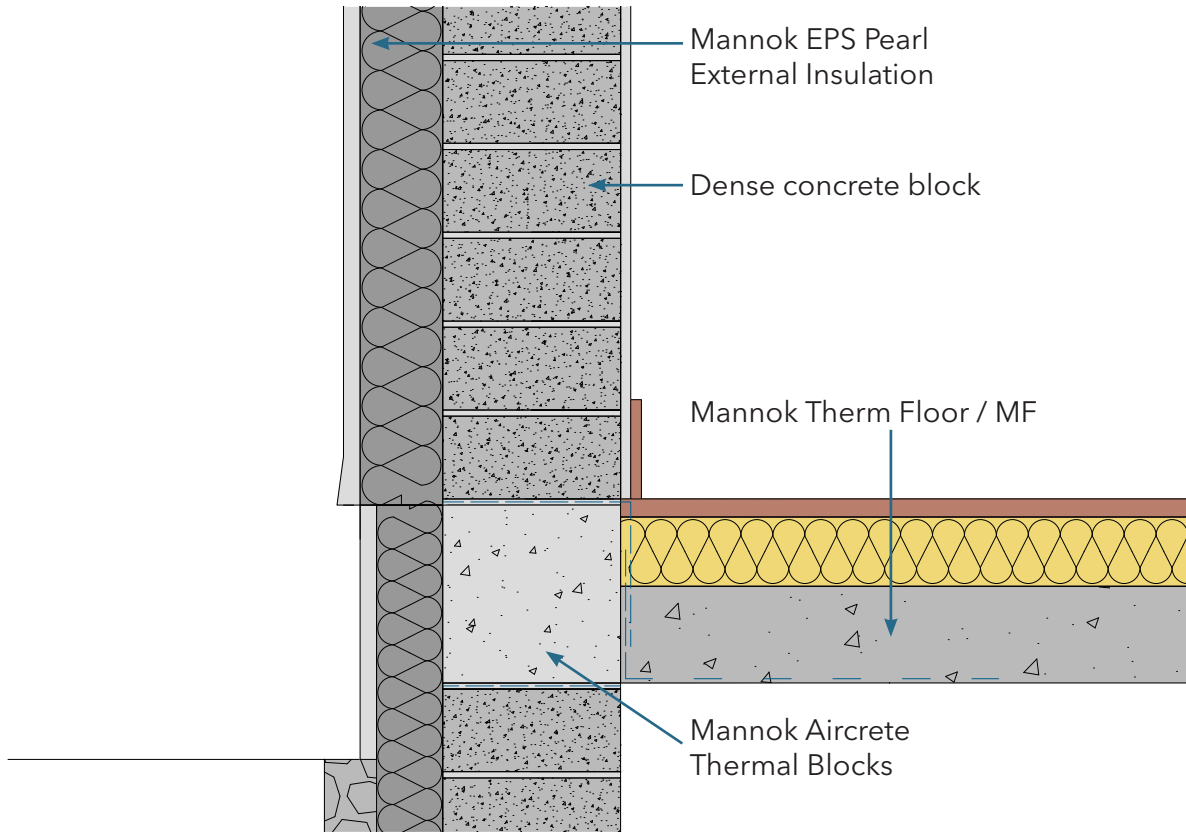
Ground Floor - Insulation above slab

Identifier

2.01

NSAI modeller no.

TM/02



	A		B		C	
	Ψ -value (W/mK)	Temperature factor (fRsi)	Ψ -value (W/mK)	Temperature factor (fRsi)	Ψ -value (W/mK)	Temperature factor (fRsi)
	Wall U-value 0.21W/m ² K (partial fill insulation only) Roof = 0.16, Floor = 0.21		Wall U-value 0.15W/m ² K (partial fill insulation with internal insulation) Roof = 0.14, Floor = 0.15		Wall U-value 0.15W/m ² K (partial fill insulation only) Roof = 0.14, Floor = 0.15	
Inner leaf type	Ψ -value (W/mK)	Temperature factor (fRsi)	Ψ -value (W/mK)	Temperature factor (fRsi)	Ψ -value (W/mK)	Temperature factor (fRsi)
Mannok Aircrete Super	0.071	0.880	0.080	0.89	0.181	0.82
Mannok Aircrete Standard	0.088	0.860	0.100	0.88	0.100	0.890
Mannok Aircrete Seven	0.094	0.860	0.106	0.88	0.108	0.890

Notes

Two courses of Mannok Aircrete Thermal Blocks used below DPC. External insulation extends 600mm below internal finished floor level.

