

## Description

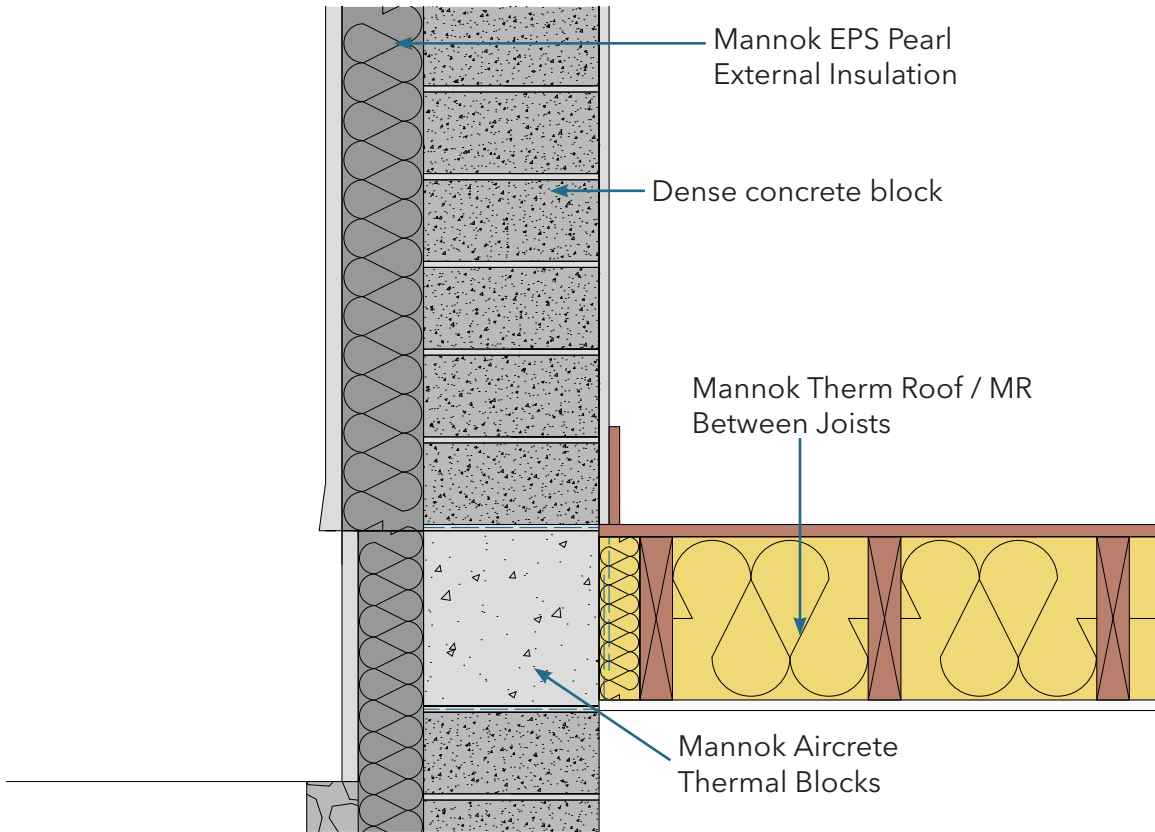
Timber Suspended Ground Floor

### Identifier

2.03

### NSAI modeller no.

TM/02



	A		B		C	
	Wall U-value 0.21W/m <sup>2</sup> K (partial fill insulation only) Roof = 0.16, Floor = 0.21		Wall U-value 0.15W/m <sup>2</sup> K (partial fill insulation with internal insulation) Roof = 0.14, Floor = 0.15		Wall U-value 0.15W/m <sup>2</sup> K (partial fill insulation only) Roof = 0.14, Floor = 0.15	
Inner leaf type	Ψ-value (W/mK)	Temperature factor (fRsi)	Ψ-value (W/mK)	Temperature factor (fRsi)	Ψ-value (W/mK)	Temperature factor (fRsi)
Mannok Aircrete Super	0.062	0.870	0.114	0.86	0.084	0.910
Mannok Aircrete Standard	0.086	0.860	0.141	0.86	0.108	0.890
Mannok Aircrete Seven	0.095	0.850	0.163	0.87	0.117	0.890

## Notes

Perimeter insulation between first joist and wall to have thermal resistance of minimum 1.14m<sup>2</sup>K/W. External insulation to extend minimum 600mm below internal finished floor level.

