

## Description

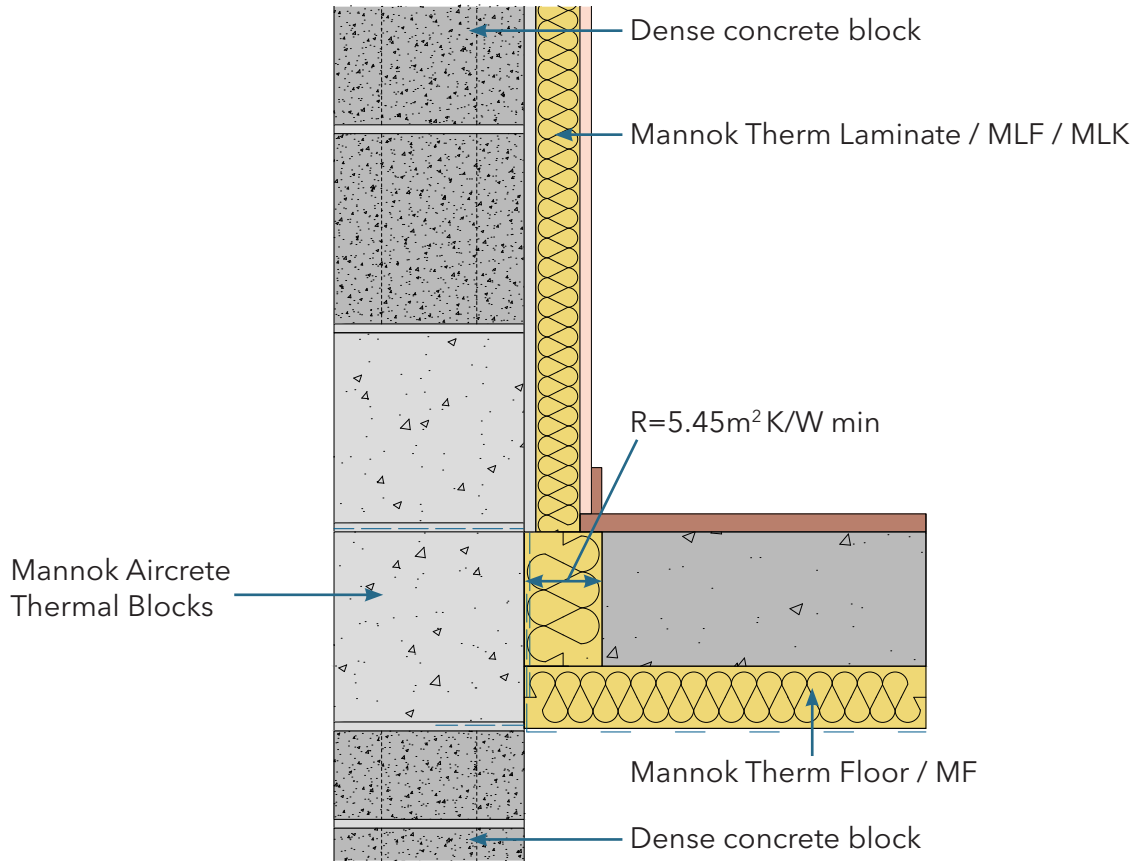
Ground Floor - Insulation below slab

### Identifier

6.02

### NSAI modeller no.

TM/02



	A	B	C
	Wall U-value 0.21W/m2K (partial fill insulation only) Roof = 0.16, Floor = 0.21	Wall U-value 0.15W/m2K (partial fill insulation with internal insulation) Roof = 0.14, Floor = 0.15	Wall U-value 0.15W/m2K (partial fill insulation only) Roof = 0.14, Floor = 0.15

Inner leaf type	$\Psi$ -value (W/mK)	Temperature factor (fRsi)	$\Psi$ -value (W/mK)	Temperature factor (fRsi)	$\Psi$ -value (W/mK)	Temperature factor (fRsi)
Mannok Aircrete Super	0.020	0.91	0.031	0.92	0.046	0.93
Mannok Aircrete Standard	0.024	0.91	0.034	0.92	0.048	0.93
Mannok Aircrete Seven	0.026	0.91	0.035	0.92	0.049	0.93

## Notes

Perimeter insulation to have minimum thermal resistance of 5.45m<sup>2</sup>K/W. For U-values down to 0.12W/m<sup>2</sup>K for walls, please consult Technical by Mannok. For walls type C, the inner leaf comprises Mannok Aircrete Thermal Block.

