

## Description

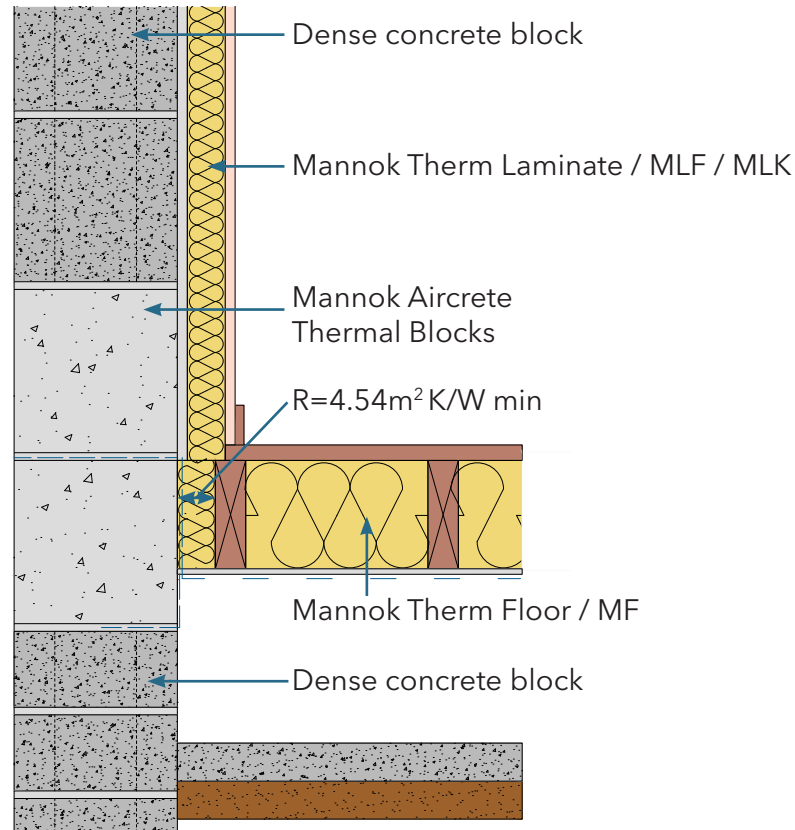
Timber Suspended Ground Floor

### Identifier

6.03

### NSAI modeller no.

TM/02



	A	B	C
	Wall U-value 0.21W/m <sup>2</sup> K (partial fill insulation only) Roof = 0.16, Floor = 0.21	Wall U-value 0.15W/m <sup>2</sup> K (partial fill insulation with internal insulation) Roof = 0.14, Floor = 0.15	Wall U-value 0.15W/m <sup>2</sup> K (partial fill insulation only) Roof = 0.14, Floor = 0.15

Inner leaf type	$\Psi$ -value (W/mK)	Temperature factor (fRsi)	$\Psi$ -value (W/mK)	Temperature factor (fRsi)	$\Psi$ -value (W/mK)	Temperature factor (fRsi)
Mannok Aircrete Super	0.021	0.87	0.006	0.90	0.010	0.91
Mannok Aircrete Standard	0.020	0.87	0.007	0.90	0.007	0.91
Mannok Aircrete Seven	0.021	0.87	0.008	0.90	0.007	0.91

## Notes

Perimeter insulation to have thermal resistance of minimum 1.14m<sup>2</sup>K/W.

