

## Description

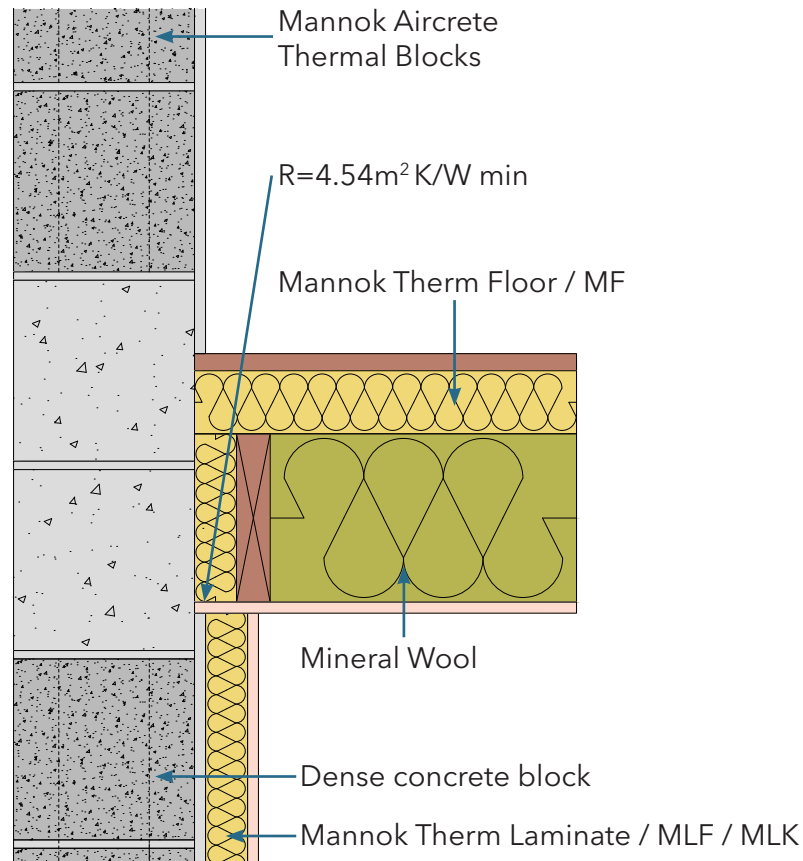
Ventilated Roof - Attic floor level

### Identifier

6.13

### NSAI modeller no.

TM/02



	A	B	C
	Wall U-value 0.21W/m2K (partial fill insulation only) Roof = 0.16, Floor = 0.21	Wall U-value 0.15W/m2K (partial fill insulation with internal insulation) Roof = 0.14, Floor = 0.15	Wall U-value 0.15W/m2K (partial fill insulation only) Roof = 0.14, Floor = 0.15

Inner leaf type	A		B		C	
	$\Psi$ -value (W/mK)	Temperature factor (fRsi)	$\Psi$ -value (W/mK)	Temperature factor (fRsi)	$\Psi$ -value (W/mK)	Temperature factor (fRsi)
Mannok Aircrete Super	0.028	0.84	0.025	0.85	0.022	0.87
Mannok Aircrete Standard	0.029	0.83	0.025	0.85	0.022	0.87
Mannok Aircrete Seven	0.030	0.83	0.026	0.85	0.022	0.86

## Notes

The thermal resistance of the insulation between the first truss and the gable wall should not be less than 1.8m2K/W. For wall type C, the masonry leaf is Mannok Aircrete Thermal Blocks continuously. For walling down to U-values of 0.12W/m2K, contact Technical by Mannok.

