

Description

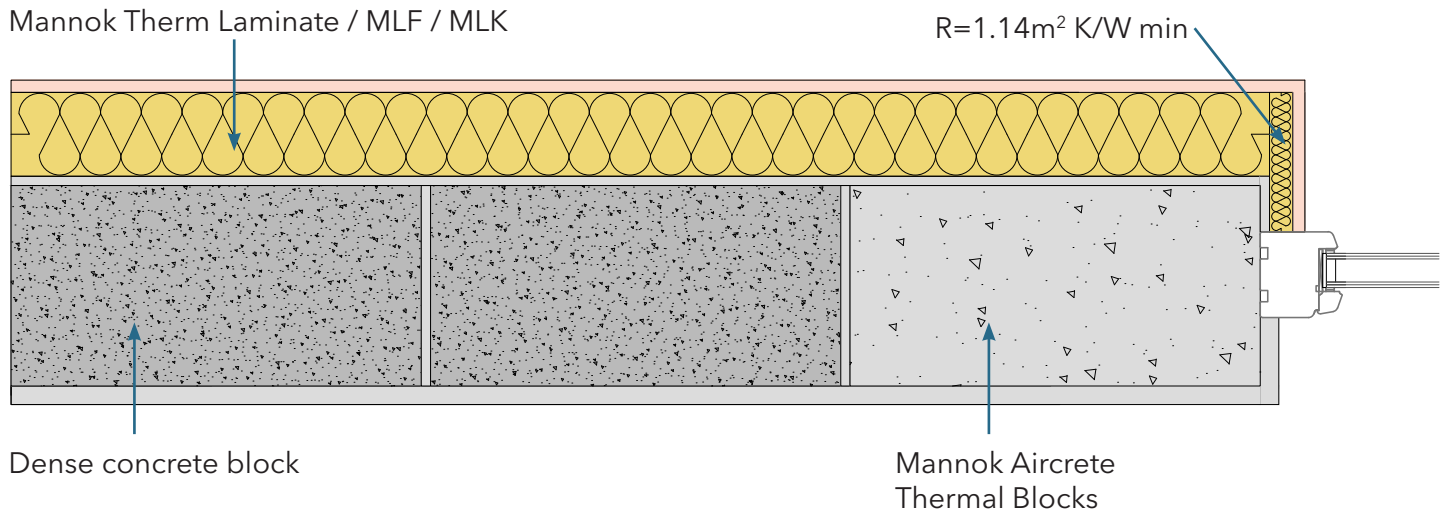
Ope - Jamb Detail

Identifier

6.20

NSAI modeller no.

TM/02



| | A | | B | | C | |
|--------------------------|--|---------------------------|--|---------------------------|--|---------------------------|
| | Wall U-value 0.21W/m ² K (partial fill insulation only) Roof = 0.16, Floor = 0.21 | | Wall U-value 0.15W/m ² K (partial fill insulation with internal insulation) Roof = 0.14, Floor = 0.15 | | Wall U-value 0.15W/m ² K (partial fill insulation only) Roof = 0.14, Floor = 0.15 | |
| Inner leaf type | Ψ-value (W/mK) | Temperature factor (fRsi) | Ψ-value (W/mK) | Temperature factor (fRsi) | Ψ-value (W/mK) | Temperature factor (fRsi) |
| Mannok Aircrete Super | -0.003 | 0.91 | 0.012 | 0.91 | 0.027 | 0.91 |
| Mannok Aircrete Standard | 0.007 | 0.90 | 0.020 | 0.90 | 0.030 | 0.90 |
| Mannok Aircrete Seven | 0.010 | 0.90 | 0.022 | 0.89 | 0.032 | 0.89 |

Notes

Install insulation to jamb with a minimum R-value of 1.14 m²K/W. Inside of Window frame to be positioned no greater than 40mm from internal face of hollow block.

