

Description

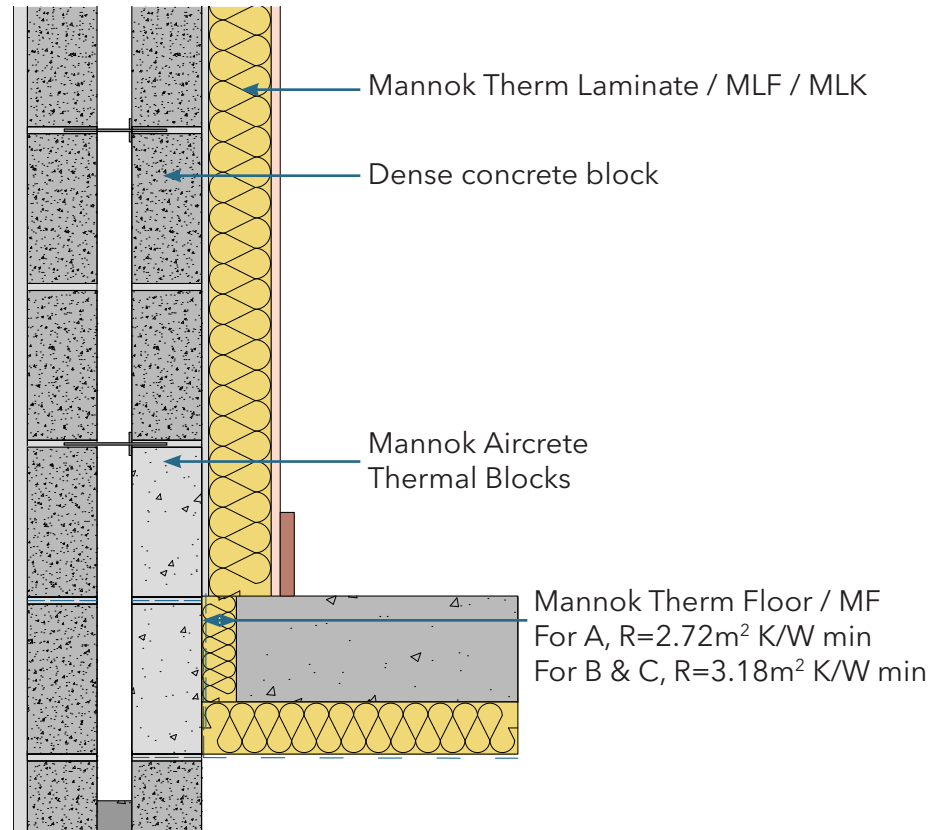
Ground Floor - Insulation below slab

Identifier

3.02

NSAI modeller no.

TM/02



	A	B	C
	Wall U-value 0.21W/m ² K (partial fill insulation only) Roof = 0.16, Floor = 0.21	Wall U-value 0.15W/m ² K (partial fill insulation with internal insulation) Roof = 0.14, Floor = 0.15	Wall U-value 0.15W/m ² K (partial fill insulation only) Roof = 0.14, Floor = 0.15

Inner leaf type	Ψ-value (W/mK)	Temperature factor (fRsi)	Ψ-value (W/mK)	Temperature factor (fRsi)	Ψ-value (W/mK)	Temperature factor (fRsi)
Mannok Aircrete Super	0.073	0.88	0.065	0.87	0.070	0.91
Mannok Aircrete Standard	0.076	0.87	0.067	0.87	0.070	0.91
Mannok Aircrete Seven	0.077	0.87	0.067	0.87	0.070	0.91

Notes

For wall type A, perimeter insulation to have minimum thermal resistance of 2.72m²K/W. For walls types B & C, perimeter insulation to have minimum thermal resistance of 3.18m²K/W. For U-values down to 0.12W/m²K for walls, please consult Technical by Mannok. For walls types B & C, the inner leaf comprises Mannok Aircrete Thermal Block.

