

Description

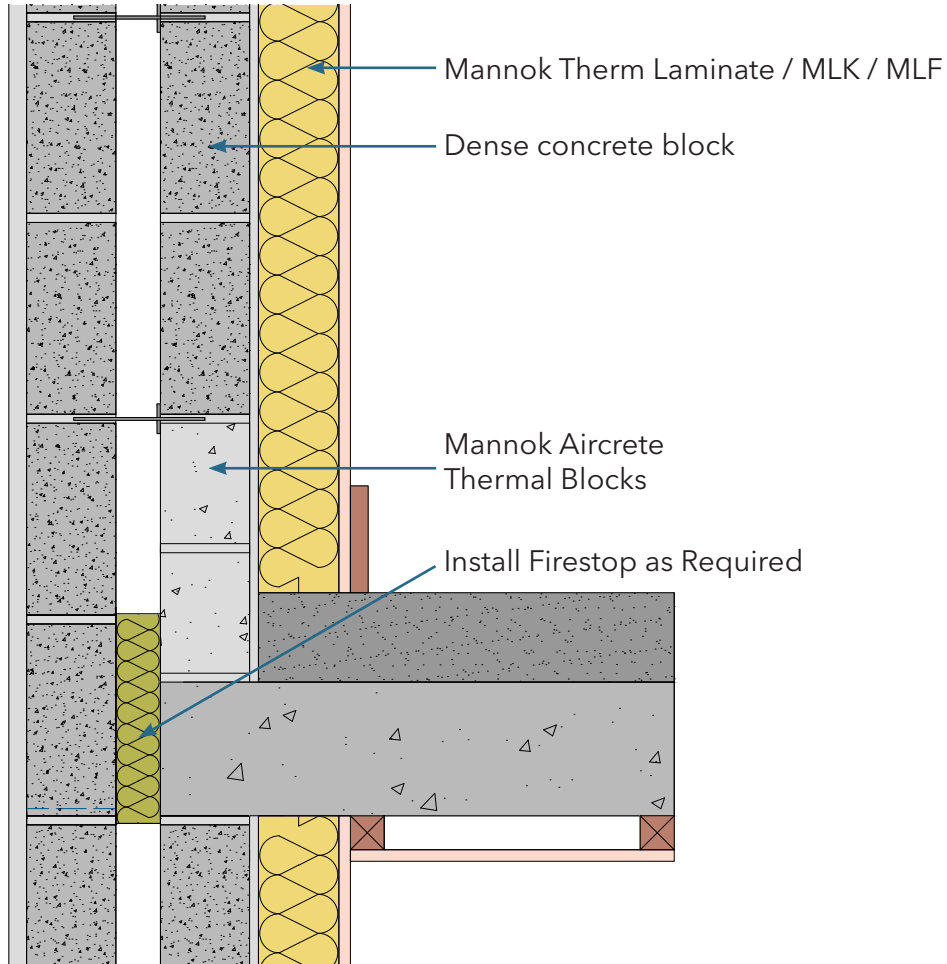
Timber Intermediate Floor - Within a dwelling

Identifier

3.04

NSAI modeller no.

TM/02



A	B	C
Wall U-value 0.21W/m ² K (partial fill insulation only) Roof = 0.16, Floor = 0.21	Wall U-value 0.15W/m ² K (partial fill insulation with internal insulation) Roof = 0.14, Floor = 0.15	Wall U-value 0.15W/m ² K (partial fill insulation only) Roof = 0.14, Floor = 0.15

Inner leaf type	A		B		C	
	Ψ-value (W/mK)	Temperature factor (fRsi)	Ψ-value (W/mK)	Temperature factor (fRsi)	Ψ-value (W/mK)	Temperature factor (fRsi)
Mannok Aircrete Super	0.407	0.78	0.402	0.307	0.007	0.84
Mannok Aircrete Standard	0.418	0.77	0.411	0.326	0.005	0.83
Mannok Aircrete Seven	0.421	0.77	0.414	0.333	0.005	0.82

Notes

Assessment carried out in accordance with TGD Part L (2011) Appendix D. This detail does not confer compliance with any other aspect of the building regulations, which should be separately assessed. Assign half of the psi-values in the table above to each dwelling in the calculation of the y-factor for use in a BER/DEAP assessment.

