

## Description

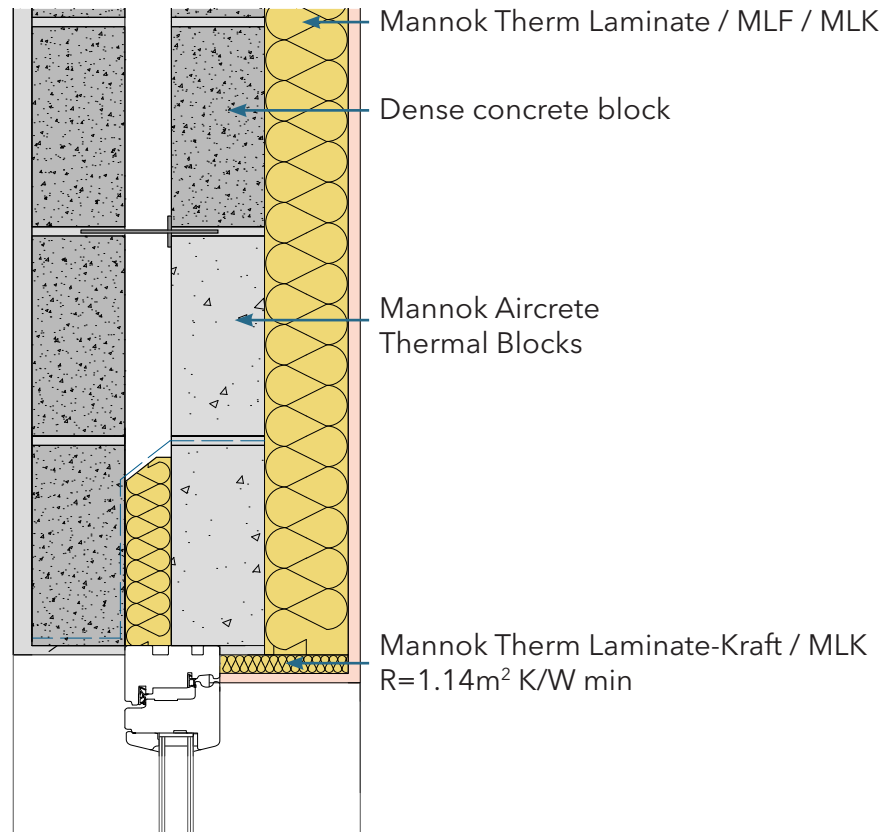
Op - Sill

### Identifier

3.21

### NSAI modeller no.

TM/02



	A		B		C	
	Wall U-value 0.21W/m <sup>2</sup> K (partial fill insulation only) Roof = 0.16, Floor = 0.21		Wall U-value 0.15W/m <sup>2</sup> K (partial fill insulation with internal insulation) Roof = 0.14, Floor = 0.15		Wall U-value 0.15W/m <sup>2</sup> K (partial fill insulation only) Roof = 0.14, Floor = 0.15	
Inner leaf type	Ψ-value (W/mK)	Temperature factor (fRsi)	Ψ-value (W/mK)	Temperature factor (fRsi)	Ψ-value (W/mK)	Temperature factor (fRsi)
Mannok Aircrete Super	0.018	0.89	0.029	0.88	0.039	0.88
Mannok Aircrete Standard	0.020	0.88	0.031	0.88	0.038	0.88
Mannok Aircrete Seven	0.021	0.88	0.031	0.88	0.038	0.88

## Notes

3mm Stainless Steel Lintel is fully insulated (conductivity 0.04 W/m<sup>2</sup>K) and does not have a base plate. Insulation at lintel soffit to have a minimum R-value of 1.14 m<sup>2</sup>K/W.

