

## Description

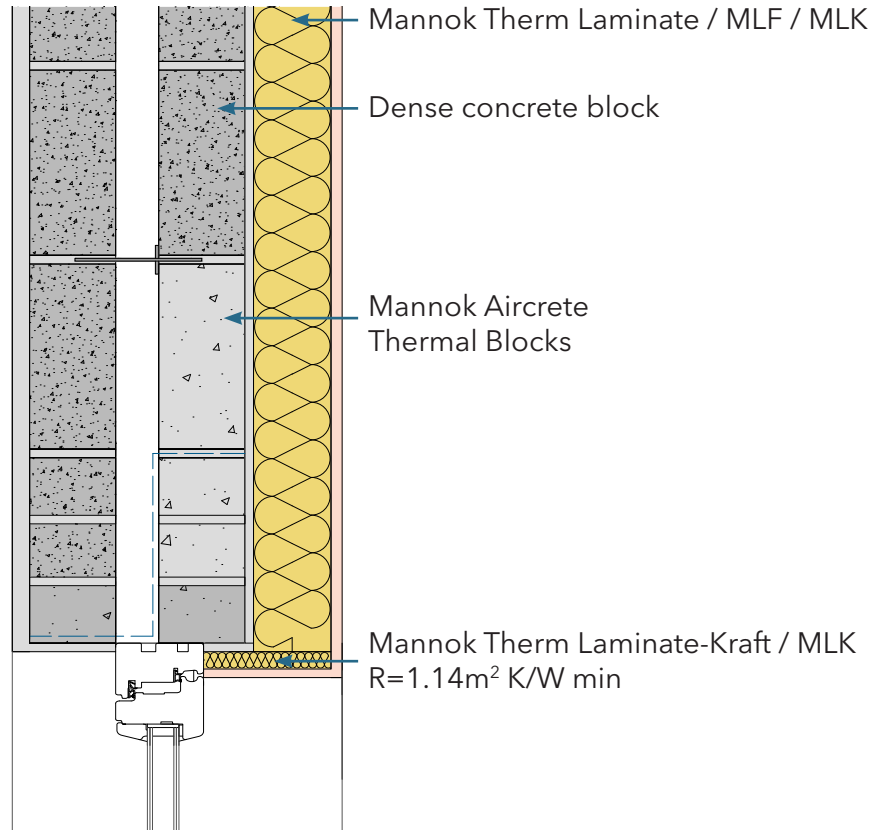
Opel - Prestressed concrete lintels

### Identifier

3.22

### NSAI modeller no.

TM/02



	A	B	C
	Wall U-value 0.21W/m <sup>2</sup> K (partial fill insulation only) Roof = 0.16, Floor = 0.21	Wall U-value 0.15W/m <sup>2</sup> K (partial fill insulation with internal insulation) Roof = 0.14, Floor = 0.15	Wall U-value 0.15W/m <sup>2</sup> K (partial fill insulation only) Roof = 0.14, Floor = 0.15

Inner leaf type	A		B		C	
	Ψ-value (W/mK)	Temperature factor (fRsi)	Ψ-value (W/mK)	Temperature factor (fRsi)	Ψ-value (W/mK)	Temperature factor (fRsi)
Mannok Aircrete Super	0.017	0.89	0.029	0.89	0.039	0.89
Mannok Aircrete Standard	0.021	0.89	0.032	0.88	0.039	0.88
Mannok Aircrete Seven	0.023	0.89	0.033	0.88	0.040	0.88

## Notes

Insulation at cavity closer to have a minimum R-value of 0.27 m<sup>2</sup>K/W. Insulation at lintel soffit to have a minimum R-value of 1.14 m<sup>2</sup>K/W.

