

## Description

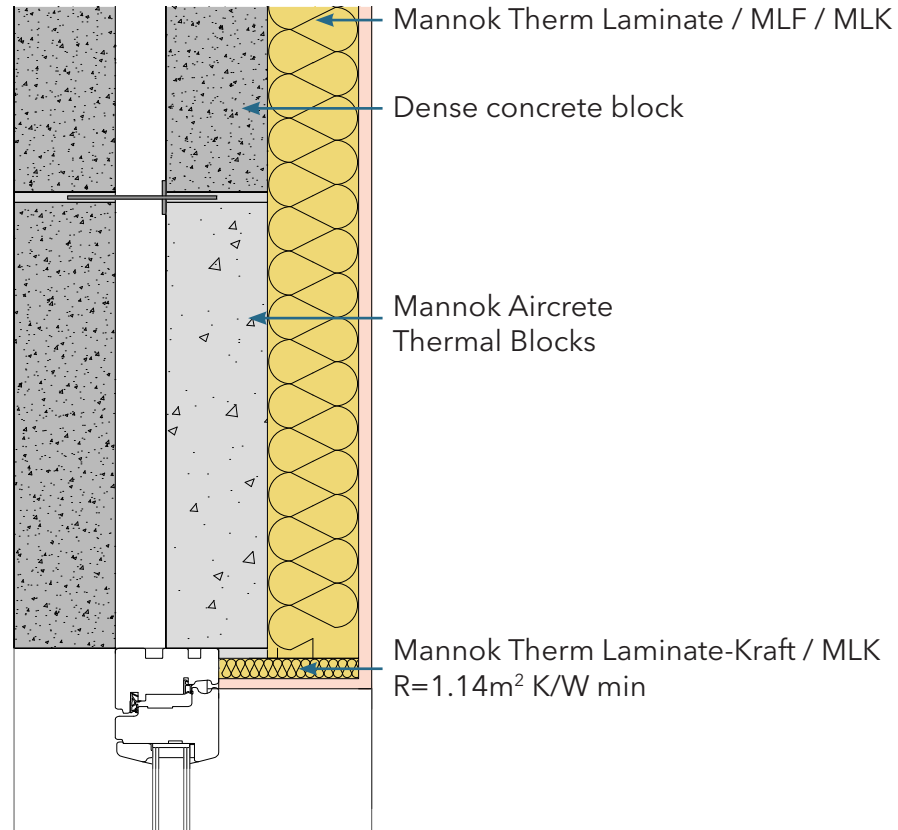
Open - Jamb with proprietary cavity closer

### Identifier

3.23

### NSAI modeller no.

TM/02



	A		B		C	
	Wall U-value 0.21W/m <sup>2</sup> K (partial fill insulation only) Roof = 0.16, Floor = 0.21		Wall U-value 0.15W/m <sup>2</sup> K (partial fill insulation with internal insulation) Roof = 0.14, Floor = 0.15		Wall U-value 0.15W/m <sup>2</sup> K (partial fill insulation only) Roof = 0.14, Floor = 0.15	
Inner leaf type	Ψ-value (W/mK)	Temperature factor (fRsi)	Ψ-value (W/mK)	Temperature factor (fRsi)	Ψ-value (W/mK)	Temperature factor (fRsi)
Mannok Aircrete Super	0.085	0.92	0.017	0.91	0.026	0.91
Mannok Aircrete Standard	0.092	0.91	0.022	0.90	0.029	0.90
Mannok Aircrete Seven	0.094	0.90	0.024	0.90	0.030	0.90

## Notes

Insulation at cavity closer to have a minimum R-value of 0.27 m<sup>2</sup>K/W. Insulation at jamb to have a minimum R-value of 1.14 m<sup>2</sup>K/W

