

Description

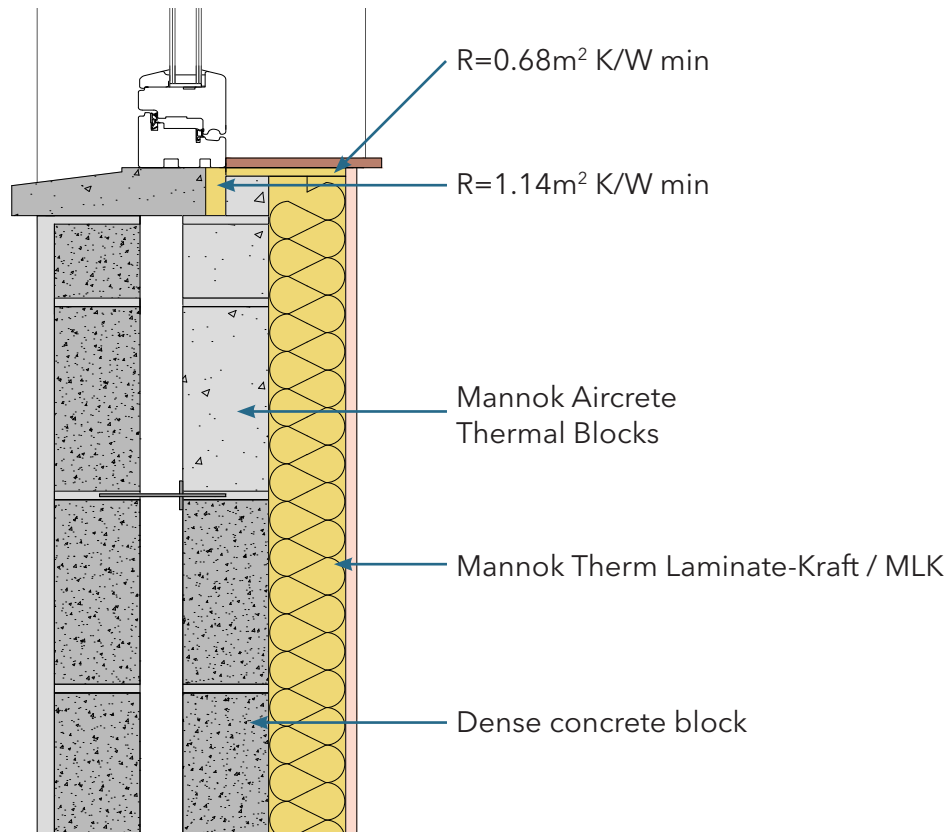
Open - Concrete Back Sill

Identifier

3.25

NSAI modeller no.

TM/02



	A		B		C	
	Wall U-value $0.21\text{W/m}^2\text{K}$ (partial fill insulation only) Roof = 0.16 , Floor = 0.21		Wall U-value $0.15\text{W/m}^2\text{K}$ (partial fill insulation with internal insulation) Roof = 0.14 , Floor = 0.15		Wall U-value $0.15\text{W/m}^2\text{K}$ (partial fill insulation only) Roof = 0.14 , Floor = 0.15	
Inner leaf type	Ψ -value (W/mK)	Temperature factor (fRsi)	Ψ -value (W/mK)	Temperature factor (fRsi)	Ψ -value (W/mK)	Temperature factor (fRsi)
Mannok Aircrete Super	0.026	0.86	0.037	0.85	0.047	0.85
Mannok Aircrete Standard	0.031	0.85	0.041	0.85	0.048	0.85
Mannok Aircrete Seven	0.032	0.85	0.042	0.84	0.049	0.84

Notes

Insulation under cill to have an R value of $0.68\text{ m}^2\text{K/W}$ and behind of $1.14\text{ m}^2\text{K/W}$

