

Description

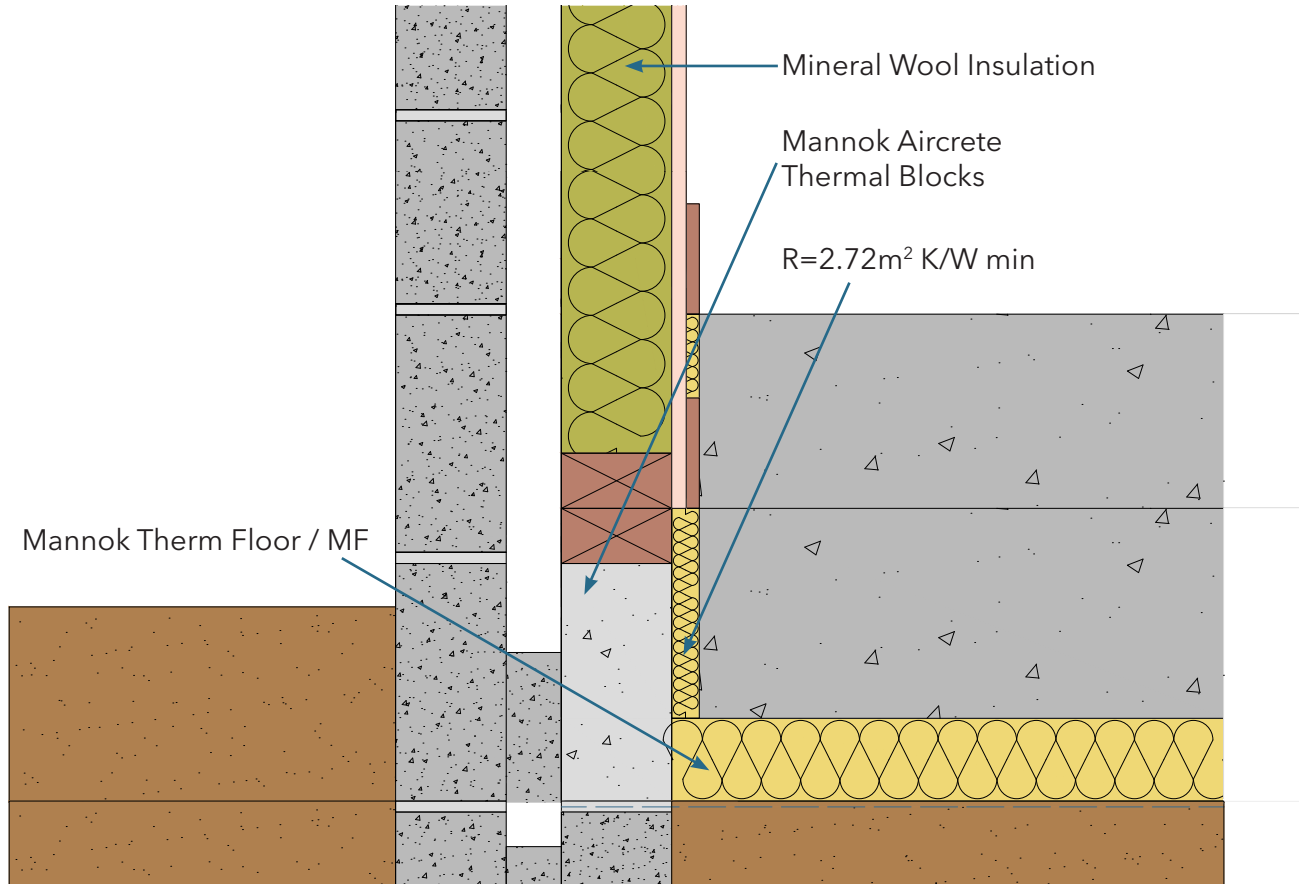
Ground Floor - Insulation below slab

Identifier

4.02

NSAI modeller no.

TM/02



	A	B	C
	Wall U-value 0.21W/m ² K (partial fill insulation only) Roof = 0.16, Floor = 0.21	Wall U-value 0.15W/m ² K (partial fill insulation with internal insulation) Roof = 0.14, Floor = 0.15	Wall U-value 0.15W/m ² K (partial fill insulation only) Roof = 0.14, Floor = 0.15

Inner leaf type	Ψ-value (W/mK)	Temperature factor (fRsi)	Ψ-value (W/mK)	Temperature factor (fRsi)	Ψ-value (W/mK)	Temperature factor (fRsi)
Mannok Aircrete Super	0.084	0.86	0.067	0.89	0.056	0.90
Mannok Aircrete Standard	0.87	0.86	0.068	0.88	0.057	0.90
Mannok Aircrete Seven	0.088	0.86	0.069	0.88	0.058	0.90

Notes

Perimeter insulation to have minimum thermal resistance of 2.72m²K/W.
Wall type A uses mineral wool insulation (0.04W/mK) between studs. Wall types B & C use Mannok PIR Insulation. For U-values down to 0.12W/m²K for walls, please consult Technical by Mannok.

