

## Description

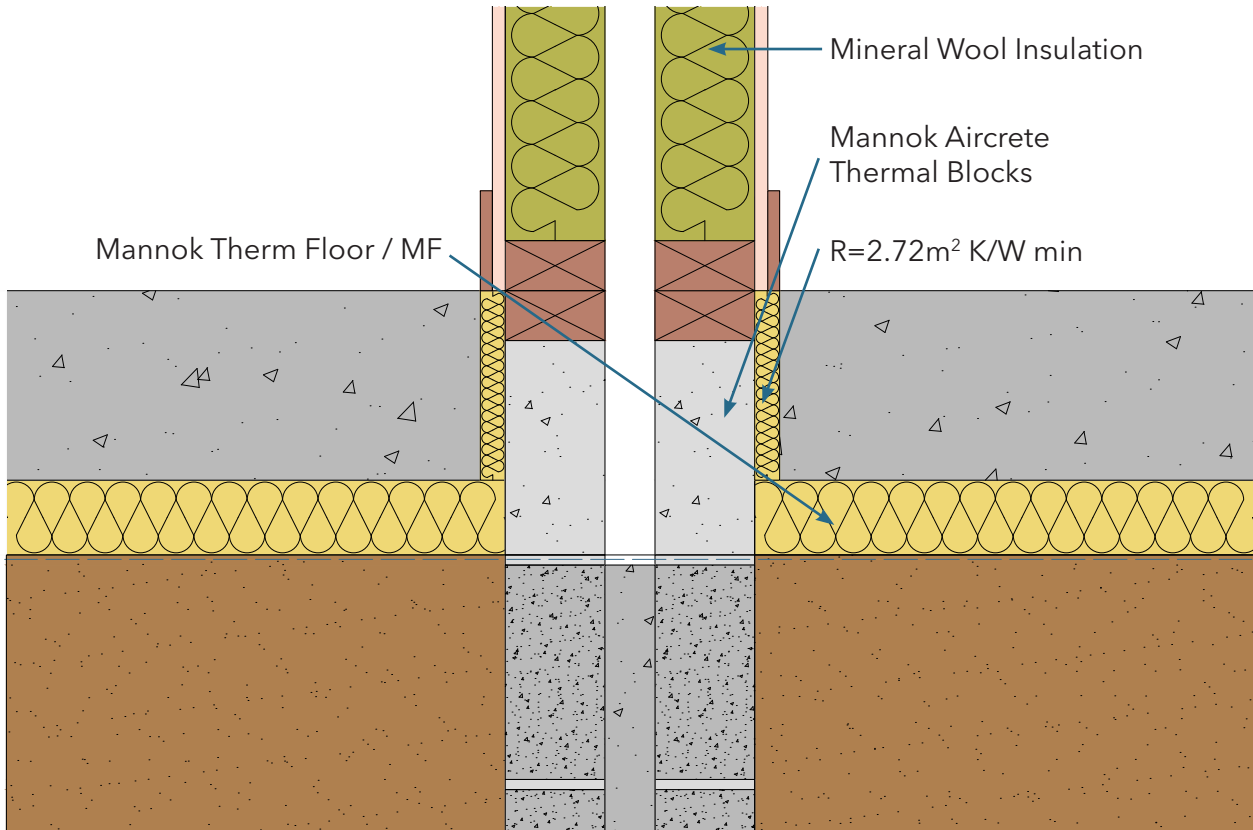
Timber Frame Separating Wall through ground floor

### Identifier

4.23.1

### NSAI modeller no.

TM/02



	A	B	C
	Wall U-value 0.21W/m <sup>2</sup> K (partial fill insulation only) Roof = 0.16, Floor = 0.21	Wall U-value 0.15W/m <sup>2</sup> K (partial fill insulation with internal insulation) Roof = 0.14, Floor = 0.15	Wall U-value 0.15W/m <sup>2</sup> K (partial fill insulation only) Roof = 0.14, Floor = 0.15

Inner leaf type	A		B		C	
	Ψ-value (W/mK)	Temperature factor (fRsi)	Ψ-value (W/mK)	Temperature factor (fRsi)	Ψ-value (W/mK)	Temperature factor (fRsi)
Mannok Aircrete Super	0.084	0.86	0.067	0.89	0.056	0.90
Mannok Aircrete Standard	0.087	0.86	0.068	0.88	0.057	0.90
Mannok Aircrete Seven	0.088	0.86	0.069	0.88	0.058	0.90

## Notes

Notes: Perimeter insulation to have minimum thermal resistance of 2.72m<sup>2</sup>K/W. Wall type A uses mineral wool insulation (0.04W/mK) between studs. Wall types B & C use Mannok PIR Insulation. For U-values down to 0.12W/m<sup>2</sup>K for walls, please consult Technical by Mannok.

